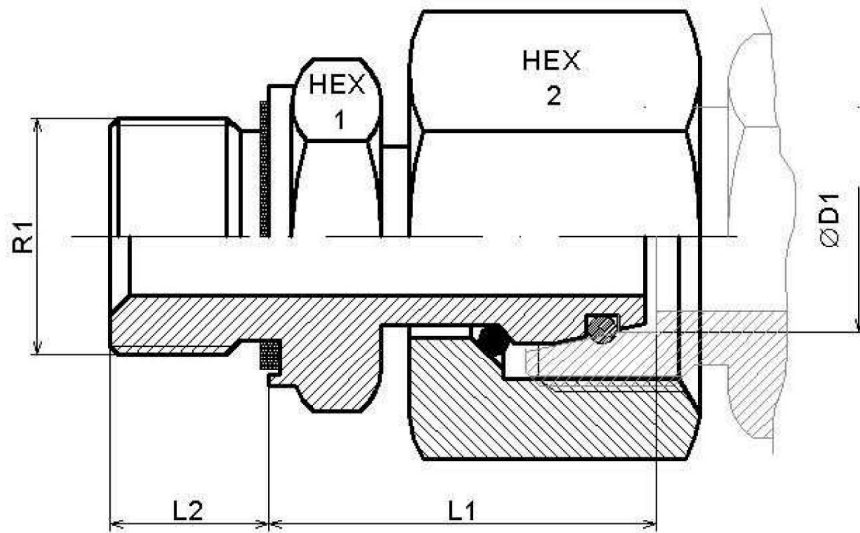


Straight stud standpipe adaptor with captive seal BSP cylindrical-metric swivel fem.



| Part nº | ØD1 | Serie | R1 | Working Pressure (bar) | L | L1 | HEX 1 | HEX 2 |
|------------------------------|-----|-------|-----------|------------------------|------|----|-------|-------|
| Z RAL 6 R 1/8TLMWD | 6 | L | 1/8"BSP | 315 | 20.5 | 8 | 14 | 17 |
| Z RAL 8 R 1/4TLMWD | 8 | L | 1/4"BSP | 315 | 22 | 12 | 19 | 17 |
| Z RAL 10 R 1/4TLMWD | 10 | L | 1/4"BSP | 315 | 23 | 12 | 19 | 19 |
| Z RAL 12 R 1/4TLMWD | 12 | L | 1/4"BSP | 315 | 24.5 | 12 | 19 | 22 |
| Z RAL 12 R 3/8TLMWD | 12 | L | 3/8"BSP | 315 | 25 | 12 | 22 | 22 |
| Z RAL 12 R 1/2TLMWD | 12 | L | 1/2"BSP | 315 | 34.5 | 14 | 27 | 22 |
| Z RAL 15 R 1/2TLMWD | 15 | L | 1/2"BSP | 315 | 26 | 14 | 27 | 27 |
| Z RAL 18 R 1/2TLMWD | 18 | L | 1/2"BSP | 315 | 28.5 | 14 | 27 | 32 |
| Z RAL 22 R 3/4TLMWD | 22 | L | 3/4"BSP | 160 | 30 | 16 | 32 | 36 |
| Z RAL 28 R 1TLMWD | 28 | L | 1"BSP | 160 | 31 | 18 | 41 | 46 |
| Z RAL 35 R 1 1/4TLMWD | 35 | L | 1 1/4 BSP | 160 | 33.5 | 20 | 50 | 50 |
| Z RAL 42 R 1 1/2TLMWD | 42 | L | 1 1/2 BSP | 160 | 36 | 22 | 55 | 60 |
| Z RAS 6 R 1/4TLMWD | 6 | S | 1/4"BSP | 630 | 24.5 | 12 | 19 | 17 |
| Z RAS 8 R 1/4TLMWD | 8 | S | 1/4"BSP | 630 | 26 | 12 | 19 | 19 |
| Z RAS 10 R 3/8TLMWD | 10 | S | 3/8"BSP | 630 | 29 | 12 | 22 | 22 |
| Z RAS 12 R 3/8TLMWD | 12 | S | 3/8"BSP | 630 | 29 | 12 | 22 | 24 |
| Z RAS 14 R 1/2TLMWD | 14 | S | 1/2"BSP | 630 | 30 | 14 | 27 | 27 |
| Z RAS 16 R 1/2TLMWD | 16 | S | 1/2"BSP | 400 | 30 | 14 | 27 | 30 |
| Z RAS 20 R 3/4TLMWD | 20 | S | 3/4"BSP | 400 | 36 | 16 | 32 | 36 |
| Z RAS 25 R 1TLMWD | 25 | S | 1"BSP | 400 | 38 | 18 | 41 | 46 |
| Z RAS 30 R 1 1/4TLMWD | 30 | S | 1 1/4 BSP | 400 | 40 | 20 | 50 | 50 |
| Z RAS 38 R 1 1/2TLMWD | 38 | S | 1 1/2 BSP | 315 | 41 | 22 | 55 | 60 |