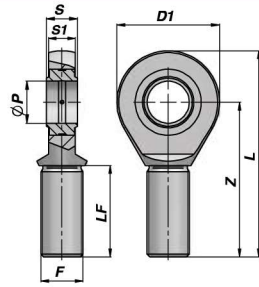
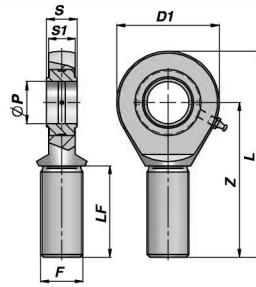


TERMINALE A SNODO RILUBRIFICABILE
BALL-JOINT END WITH GREASE NIPPLE

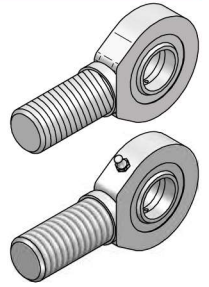
CSTFE...DO



TFE 6-20 DO/DO2RS



TFE 25-80 DO/DO2RS



Codice Code Type DO	Codice Code Type DO...2RS	ØP	Z	S	D1	S1	L	F	LF min	FC (kN)	kg
*CSTFE906DO		6	36	6	21	4.3	46.5	M6x1	18	3.4	0,01
*CSTFE908DO		8	42	8	24	6.0	54.0	M8x1.25	22	5.5	0,03
*CSTFE910DO		10	48	9	29	7.0	62.5	M10x1.5	27	8.1	0,05
*CSTFE912DO		12	54	10	34	8.0	71.0	M12x1.75	30	10.8	0,08
**CSTFE915DO		15	63	12	40	10.0	83.0	M14x2	34	17.0	0,14
**CSTFE917DO	**CSTFE917D2	17	69	14	46	11.0	92.0	M16x2	36	21.2	0,19
**CSTFE920DO	**CSTFE920D2	20	78	16	53	13.0	104.5	M20x1.5	43	30.0	0,31
CSTFE925DO	CSTFE925D2	25	94	20	64	17.0	126.0	M24x2	53	48.0	0,56
CSTFE930DO	CSTFE930D2	30	110	22	73	19.0	146.5	M30x2	65	62.0	0,89
CSTFE935DO	CSTFE935D2	35	140	25	82	21.0	181.0	M36x3	82	80.0	1,40
CSTFE940DO	CSTFE940D2	40	150	28	92	23.0	196.0	M39x3	86	100.0	1,80
CSTFE945DO	CSTFE945D2	45	163	32	102	27.0	218.0	M42x3	94	127.0	2,60
CSTFE950DO	CSTFE950D2	50	185	35	112	30.0	241.0	M45x3	106	156.0	3,40
CSTFE960DO	CSTFE960D2	60	210	44	135	38.0	277.5	M52x3	115	245.0	5,90
CSTFE970DO	CSTFE970D2	70	235	49	160	42.0	315.0	M56x4	125	315.0	8,20
CSTFE980DO	CSTFE980D2	80	270	55	180	47.0	360.0	M64x4	140	400.0	13,10

FC = CARICO DINAMICO AMMESSO - MAX DYNAMIC LOAD

* = NON RILUBRIFICABILE - WITHOUT GREASE NIPPLE

** = RILUBRIFICABILE MEDIANTE FORO - LUBRICATING HOLE IN THE HEAD

MATERIALE : ACCIAIO ISO 12240-4 SERIE E TIPO M - MATERIAL : STEEL ISO 12240-4 SERIES E TYPE M