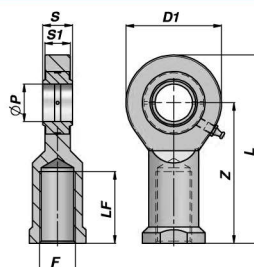
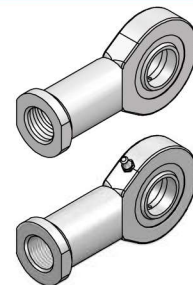


TFI 6-20 DO/D02RS



TFI 25-80 DO/D02RS



Codice Code Type DO	Codice Code Type DO...2RS	ØP	Z	S	D1	S1	L	F	LF min	FC (kN)	kg
*CSTFI806DO		6	30	6	21	4.3	40.5	M6x1	11	3.4	0,02
*CSTFI808DO		8	36	8	24	6.0	48.0	M8x1.25	15	5.5	0,04
*CSTFI810DO		10	43	9	29	7.0	57.5	M10x1.5	20	8.1	0,06
*CSTFI812DO		12	50	10	34	8.0	67.0	M12x1.75	24	10.8	0,09
**CSTFI815DO		15	61	12	40	10.0	81.0	M14x2	30	17.0	0,18
**CSTFI817DO	**CSTFI817D2	17	67	14	46	11.0	90.0	M16x2	34	21.2	0,22
**CSTFI820DO	**CSTFI820D2	20	77	16	53	13.0	103.5	M20x1.5	40	30.0	0,35
CSTFI825DO	CSTFI825D2	25	94	20	64	17.0	126.0	M24x2	48	48.0	0,64
CSTFI830DO	CSTFI830D2	30	110	22	73	19.0	146.5	M30x2	56	62.0	0,93
CSTFI835DO	NEW! CSTFI835D2	35	125	25	82	21.0	166.0	M36x3	60	80.0	1,30
CSTFI840DO	NEW! CSTFI840D2	40	142	28	92	23.0	188.0	M39x3	67	100.0	2,01
CSTFI845DO	NEW! CSTFI845D2	45	145	32	102	27.0	196.0	M42x3	65	127.0	2,50
CSTFI850DO	NEW! CSTFI850D2	50	160	35	112	30.0	216.0	M45x3	69	156.0	3,50
CSTFI860DO	NEW! CSTFI860D2	60	175	44	135	38.0	242.0	M52x3	73	245.0	5,50
CSTFI870DO	NEW! CSTFI870D2	70	200	49	160	42.0	280.0	M56x4	80	315.0	8,60
CSTFI880DO	NEW! CSTFI880D2	80	230	55	180	47.0	320.0	M64x4	85	400.0	12,00

FC = CARICO DINAMICO AMMESSO - MAX DYNAMIC LOAD

* = NON RILUBRIFICABILE - WITHOUT GREASE NIPPLE

** = RILUBRIFICABILE MEDIANTE FORO - LUBRICATING HOLE IN THE HEAD

MATERIALE : ACCIAIO ISO 12240-4 SERIE E TIPO F - MATERIAL : STEEL ISO 12240-4 SERIES E TYPE F