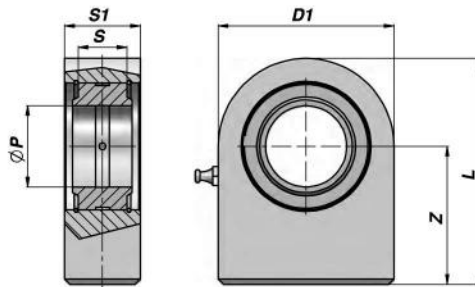


TERMINALE A SNODO RILUBRIFICABILE
BALL-JOINT END WITH GREASE NIPPLE

CSTS..N



Codice Code	ØP	Z	S	D1	S1	L	FC (kN)	kg
CSTS015N00	15	31	12	45	16.0	53.5	17.0	0,22
**CSTS016N00 (A)	16	35	14	48	17.5	59.0	21.2	0,29
CSTS017N00	17	35	14	48	17.5	59.0	21.2	0,29
CSTS020N00	20	38	16	50	19.0	63.0	30.0	0,36
CSTS025N00	25	45	20	55	23.0	72.5	48.0	0,53
CSTS030N00	30	51	22	65	28.0	83.5	62.0	0,85
CSTS035N00	35	61	25	83	30.0	102.5	80.0	1,50
CSTS040N00	40	69	28	100	35.0	119.0	100.0	2,42
CSTS045N00	45	77	32	110	40.0	132.0	127.0	3,39
CSTS050N00	50	88	35	123	40.0	149.5	156.0	4,24
CSTS060N00	60	100	44	140	50.0	170.0	245.0	7,10
CSTS070N00	70	115	49	164	55.0	197.0	315.0	10,70
CSTS080N00	80	141	55	180	60.0	231.0	400.0	15,10
CSTS090N00 (1)	90	150	60	226	65.0	263.0	490.0	23,40
CSTS100N00 (1)	100	170	70	250	70.0	295.0	610.0	33,10
CSTS110N00 (1)	110	185	70	295	80.0	332.5	655.0	48,50
CSTS120N00 (1)	120	210	85	360	90.0	390.0	950.0	79,50

FC = CARICO DINAMICO AMMESSO - MAX DYNAMIC LOAD
 (A) = FUORI NORMATIVA - OUT OF RULE

* = NON RILUBRIFICABILE - WITHOUT GREASE NIPPLE
 (1) = PANTOGRAFATI - PROFILE PLATE

MATERIALE : ACCIAIO ISO 12240-1 SERIE E
 MATERIAL : STEEL ISO 12240-1 SERIES E