



## AM5CP... MODULAR BACK PRESSURE VALVES CETOP 5

Back pressure valves type AM.5.CP are direct acting damped maximum pressure in-line valves fitted with bypass non-return valves. They are obtainable within the adjustable range 2 ÷ 250 bar.

Adjustment is by means of a grub screw or a plastic knob, on ports A or B (single), or on AB double.

The cartridge is direct acting type CMP.20.

These valves are especially used on vertical working cylinders with dragging loads.

**For the minimum permissible setting pressure depending on the spring, see the minimum pressure setting curve**

|                          |   |
|--------------------------|---|
| Max. operating pressure  | 350 bar   |
| Setting ranges:          | spring 1 30 bar   |
|                          | spring 2 140 bar  |
|                          | spring 3 250 bar  |
| Max. flow                | 80 l/min  |
| Hydraulic fluids         | Mineral oils DIN 51524  |
| Fluid viscosity          | 10 ÷ 500 mm <sup>2</sup> /s   |
| Fluid temperature        | -25°C ÷ 75°C  |
| Ambient temperature      | -25°C ÷ 60°C  |
| Max. contamination level | class 10 in accordance with NAS 1638 with filter $\beta_{25} \geq 75$ |
| Weight AM5CPA/B...       | 5,3 Kg  |
| Weight AM5CPAB...        | 7,2 Kg  |

### AM5CP...

CMP20... CARTRIDGE CATALOGUE

SCREWS AND STUDS CAP. IV • 36

### ORDERING CODE

|           |   |
|-----------|---|
| <b>AM</b> | Modular valve   |
| <b>5</b>  | CETOP 5/NG10  |
| <b>CP</b> | Back pressure valve   |
| <b>**</b> | Control on lines <b>A / B / AB</b>  |
| <b>*</b>  | Type of adjustment<br><b>M</b> = Plastic knob<br><b>C</b> = Grub screw  |
| <b>*</b>  | Setting ranges<br><b>1</b> = max. 30 bar ( <b>white spring</b> )<br><b>2</b> = max. 140 bar ( <b>yellow spring</b> )<br><b>3</b> = max. 250 bar ( <b>green spring</b> ) |
| <b>**</b> | <b>00</b> = No variant<br><b>V1</b> = Viton   |
| <b>3</b>  | Serial No.  |

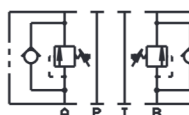
### HYDRAULIC SYMBOLS



AM5CPA

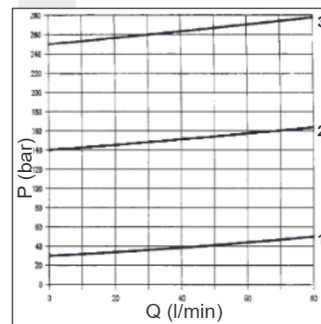


AM5CPB



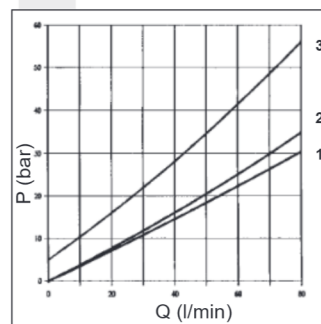
AM5CPAB

### PRESSURE - FLOW RATE

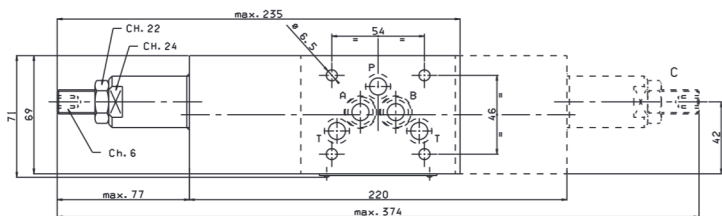
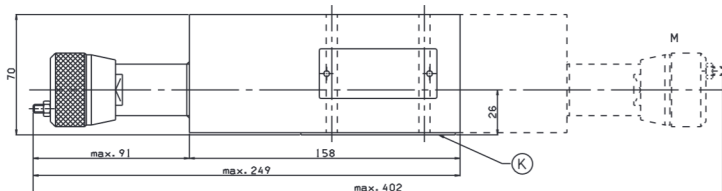


Curves n° 1 - 2 - 3 = setting ranges

### MINIMUM SETTING PRESSURE



### OVERALL DIMENSIONS



K = OR plate

Type of adjustment

**M** Plastic knob

**C** Grub screw

Support plane  
specifications

