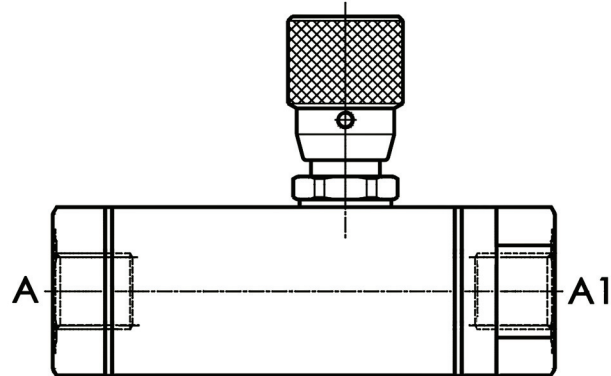
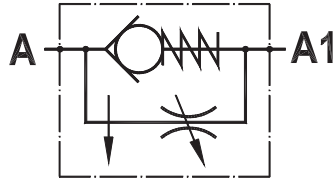


Valvola regolatrice di flusso unidirezionale compensata
Compensated flow control valve

Rev.01-2010/02



SPECIFICHE TECNICHE

Materiali: corpo e parti interne in acciaio. La superficie esterna è protetta mediante zincatura.

Portata max.: 18 l/min

Pressione max.: 250 bar, vedasi tabella a parte

TECHNICAL SPECIFICATIONS

Materials: body and internal parts are steel made. External surface zinc plated.

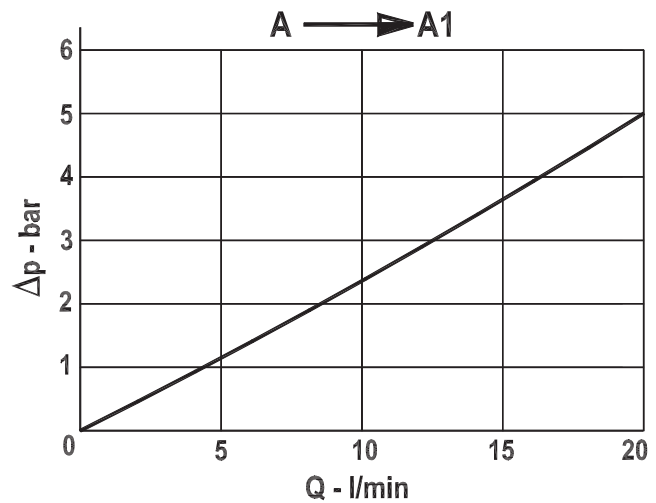
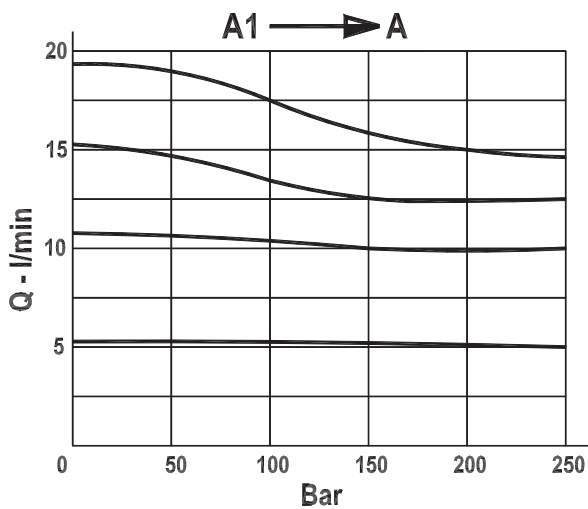
Rated flow: 18 l/min

Max. pressure: 250 bar, see data sheet

DIAGRAMMA PERDITE DI CARICO E COMPENSAZIONE - PRESSURE DROP AND COMPENSATION CURVES

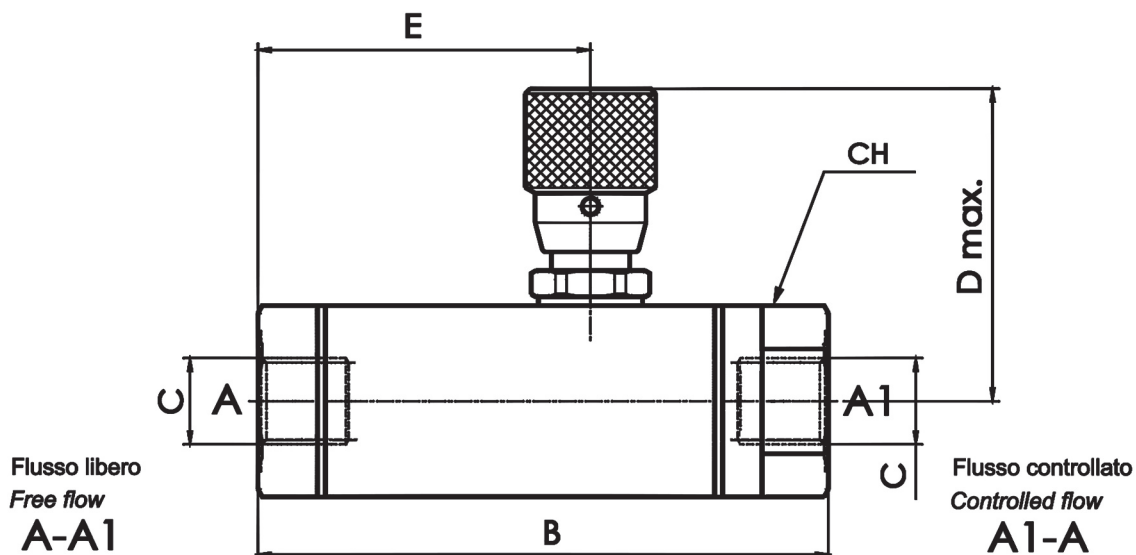
Viscosità olio 24 mm²/sec. (3,5 °E)
 Temperatura 50 °C

Oil viscosity 24 mm²/sec. (3,5 °E)
 Temperature 50 °C



Valvola regolatrice di flusso unidirezionale compensata
Compensated flow control valve

Rev.01-2010/02



TIPO TYPE	PORTATA MAX. MAX. FLOW	PRESSIONE MAX. MAX. PRESSURE	B mm	C BSPP	D mm	E mm	CH mm	PESO WEIGHT Kg
	l/min	bar						
FPCU 1/4	10	250	88	1/4"	56	51	27	0.340
FPCU 3/8	18	250	88	3/8"	56	51	27	0.320

ESEMPIO DI ORDINAZIONE - ORDERING CODE EXAMPLE

F P C U **3 / 8**

1/4 - 1/4" BSPP
 * 3/8 - 3/8" BSPP
 Connessioni - Port sizes