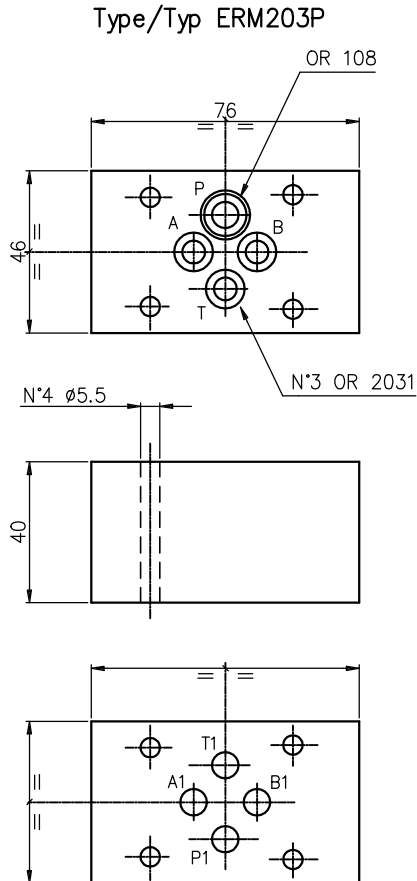
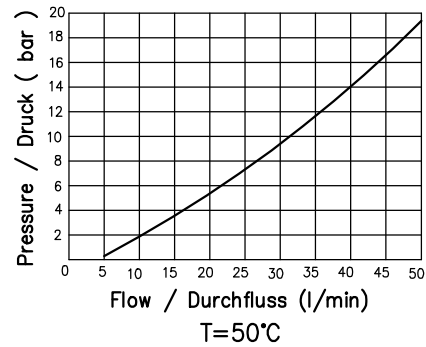


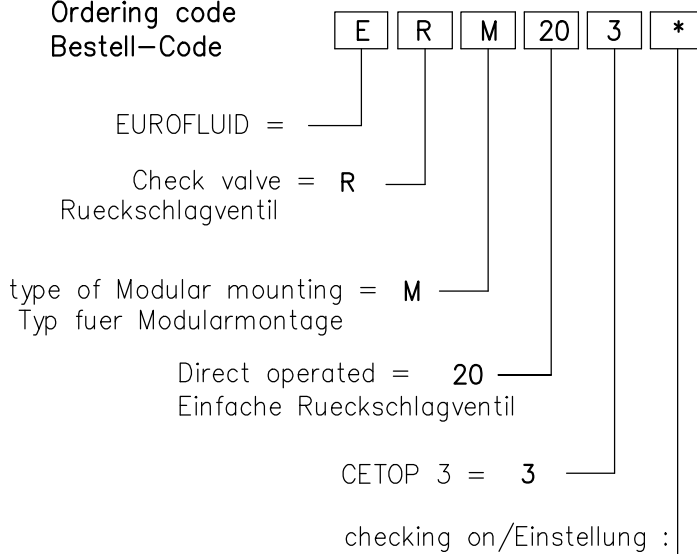
Direct operated check valves for modular mounting
 Einfache Rueckschlagventil fuer Modularmontage
 Weight / Gewicht = 0.9 Kg



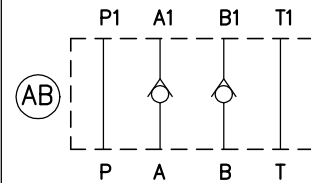
Max pressure
Druck
300 bar



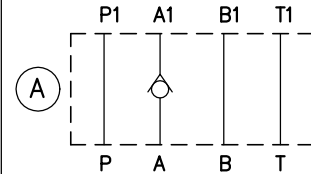
Ordering code
Bestell-Code



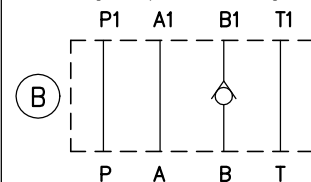
checking of / Einstellung von AB



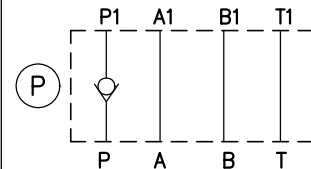
checking of / Einstellung von A



checking of / Einstellung von B



checking of / Einstellung von P



checking of / Einstellung von T

