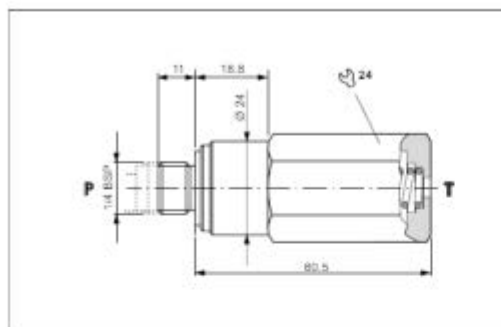
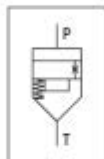


SINGLE-PHASE MOTOR START VALVE - IN-LINE MOUNTING



HYDRAULIC SYMBOL



Valve used on power units to delay system pressurisation to allow a single-phase motor to reach the required speed.

Fitted directly on the auxiliary pressure delivery line of unit 1 pumps or on the delivery branch between pump and unidirectional valve.

The body is in steel and the tapered poppet in tempered and ground steel.

HYDRAULIC FEATURES

| | |
|--|--------------------------------|
| Max. working pressure | 300 bar |
| Max. Flow | 20 l/min |
| Min. working pressure | 15 bar |
| Max operating frequency (with manual operated) | 1 Hz |
| Working Temperature | -25°C + 60°C |
| Hydraulic fluid | DIN 51524 Mineral oils |
| Fluid viscosity | 10 - 500 mm ² /s |
| Fluid temperature | -25°C + 75°C |
| Max. contamin. level class with filter | ISO 4406:1999 - class 19/17/14 |
| Weight | 0.14 kg |
| Tightening torque | 25 - 30 Nm |

ORDERING CODE

